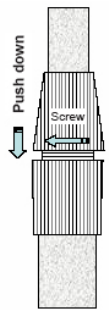


INSTRUCTIONS

Telescoping Fiberglass Feather Flagpole



The Telescoping Fiberglass Feather Flagpole is adjustable within a range of 6ft to 15ft for the HW15FTELPO, and 8ft to 21ft for the HW21FTELPO. About 4 to 8 inches of each pole section remain in the lower sections. It is fitted with inner-lock grips that twist counterclockwise to unlock the connections and allow the sections to be extended to the desired height.

Once a section has been extended to the desired length, secure the sections in the desired position by screwing the upper part of the connector from right to left on the lower part of the connector.

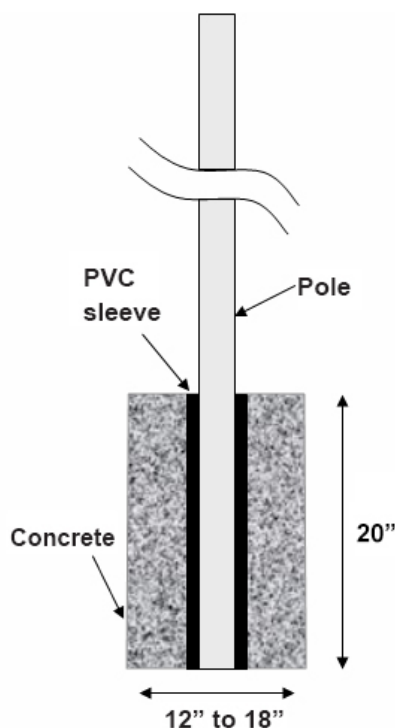
CAUTION:

1. Do not over-tighten as it may be very difficult to unlock with just a hand grip.
2. Keep the pole sections locked during transportation to avoid damage to the system.
3. When extending out the sections you will feel a stop maker about 4 to 8 inches before reaching the end of the section. Do not try to pull the sections further out.
4. **Although fiberglass is non-conductive, moisture or other conditions may cause conductivity when in contact with electrical lines, etc. Always be careful to raise and lower your pole in areas free of obstructions and overhead hazards.**

NOTE:

1. Sandy soils or other conditions may warrant a larger hole or additional reinforcement to maintain the pole in high winds.
2. Remove the flag or banner when wind speed is above 50 mph.

The Telescoping Fiberglass Feather Flagpole is supplied with a ground sleeve for ground installation. Please read the instructions below thoroughly before installation.



1

Make sure you have all the tools necessary to complete the job. Once you start mixing concrete, you must complete the process and pour the concrete rapidly.

2

Select an area that will be secure, free from trees, buildings, electrical wires, or other elements that might block air flow or create a hazard.

3

Dig out a hole that is approximately 20" deep and 12" to 18" wide. Place the ground sleeve in the center of the hole. (Tip: Place some gravel for drainage in the bottom of the hole. This will help hold the ground sleeve upright while pouring the cement.)

4

Mix the concrete according to the manufacturer's direction and pour it into the hole around the ground sleeve. (Tip: Cover the opening of the ground sleeve with a plastic bag to prevent concrete from falling into the ground sleeve).

5

Plumb the ground sleeve each time you pour some cement into the hole to be sure the pole will be perfectly vertical.

6

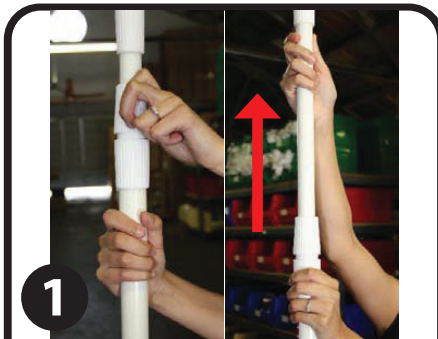
Let the cement dry for one day before installing the Telescoping Fiberglass Feather Flagpole and flying your favorite flag. Always use the proper safety devices and tools while performing this installation.

INSTRUCTIONS

Telescoping Fiberglass Feather Flagpole



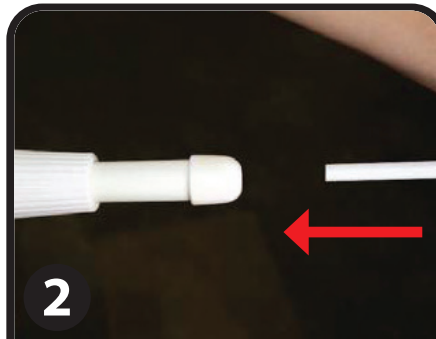
Includes:
HW Flagpole
Ground Sleeve
Tie
PE2UIRIEO Extension (for Half Drop and Teardrop Styles Only)



1

Extend the flagpole so that the two segments are about 2-3 feet extended. You can adjust later if needed.

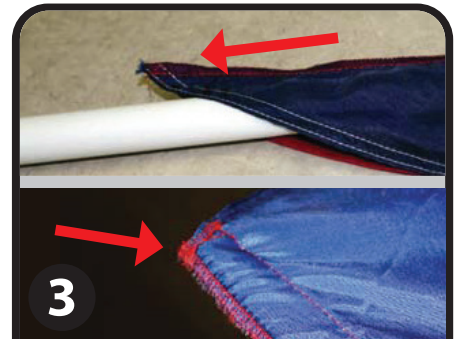
**DO NOT OVER TIGHTEN!!
PLASTIC THREADS MAY STRIP**



2

For Feather, Flutter and Square style flags proceed to step 4.

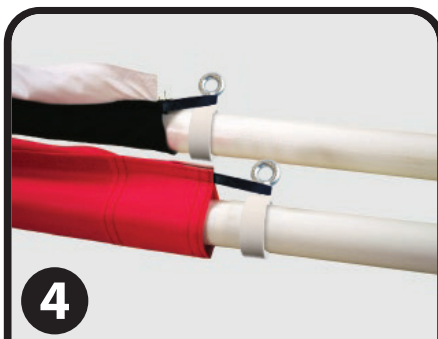
For Half Drop and Teardrop style flags only: Insert the **SHORTER** of the two pieces from the Pole Extension Kit (29.5") into the Mushroom Cap. Then insert the flexible pole piece into the chrome fitting of the shorter piece. The shorter piece may be omitted with Half Drop banners if desired.



3

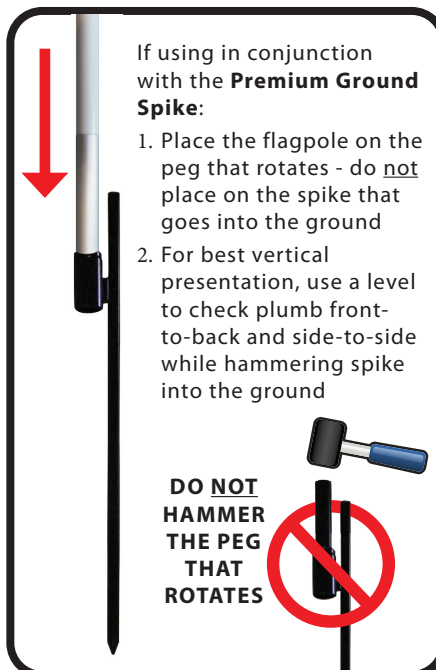
Slide the extension rods and flagpole thru the pole sleeve of the flag.

MAKE SURE that the tip of the rod is in the reinforced pocket at the end of the pole sleeve!!



4

The eye bolt ring slides up the bottom of the pole. The eye bolt goes through the loop or grommet at the bottom end of banner. Slide the ring down the pole until you have proper banner tension (not extremely tight, just enough to make the banner taut.) Tighten the eyebolt to secure in place. **DO NOT OVERTIGHTEN OR EYE BOLT RING MAY SNAP.**



If using in conjunction with the **Premium Ground Spike**:

1. Place the flagpole on the peg that rotates - do not place on the spike that goes into the ground
2. For best vertical presentation, use a level to check plumb front-to-back and side-to-side while hammering spike into the ground

**DO NOT
HAMMER
THE PEG
THAT
ROTATES**



This product is for outdoor promotional use only and should not be left out in extreme weather conditions. Please use common sense guidelines and do not display this product outdoors when extreme winds or storms may be present.